

Control of Soil Borne Diseases



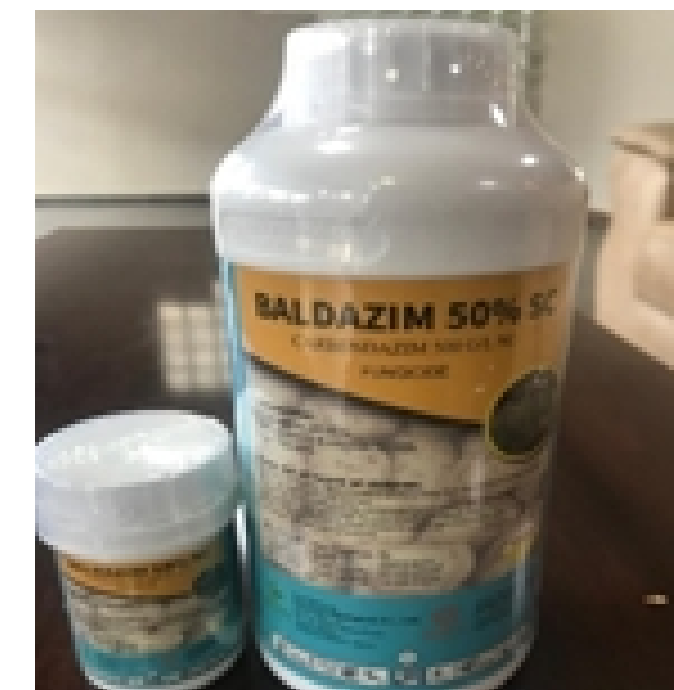
Lambex Lambda-Cyhalothrin 5% E.C

- Improves the root system (more root hairs, thus better uptake of water and nutrients such as calcium, Iron & trace elements)
- Protects the roots against soil-borne pathogens.

NB: Apply on tubers before planting; Do not mix with chemical fungicides.

Rate: 10ml/20L

Prevention of Late and Early Blight



Baldazim

- It's a contact bactericide and fungicide with preventive effects.
- Excellent rain fastness property.

Rate: 10ml/20L

Pack Sizes: 100ml, 1Litre

Control of Late and Early Blight



Balcozeb 80WP

- Has both curative and preventive mode of action.
- Long lasting residue effect thus ensuring prolonged protection.
- Highly systemic and contact action.

Rate: 50g/20L

Pack Sizes: 25kg



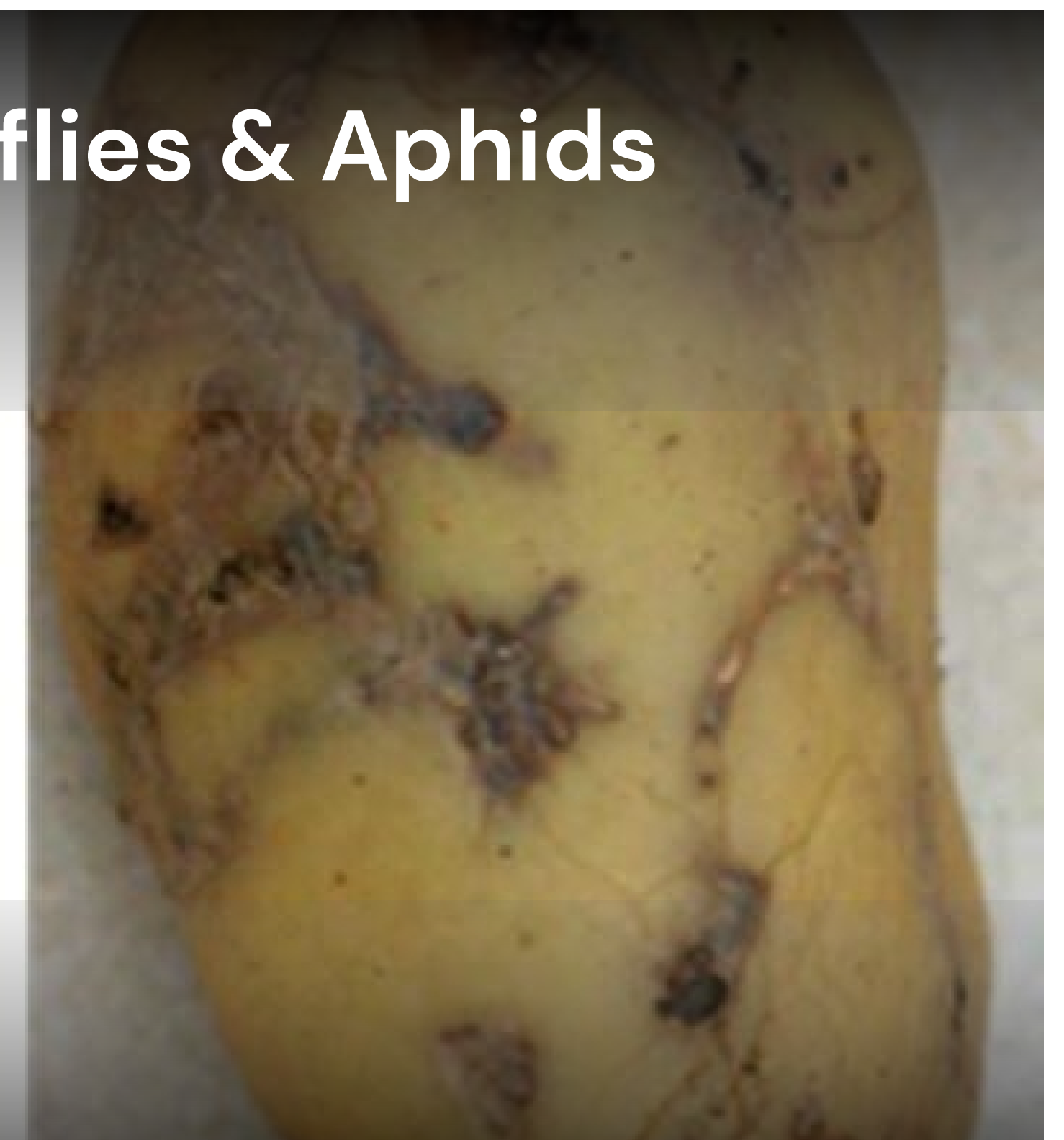
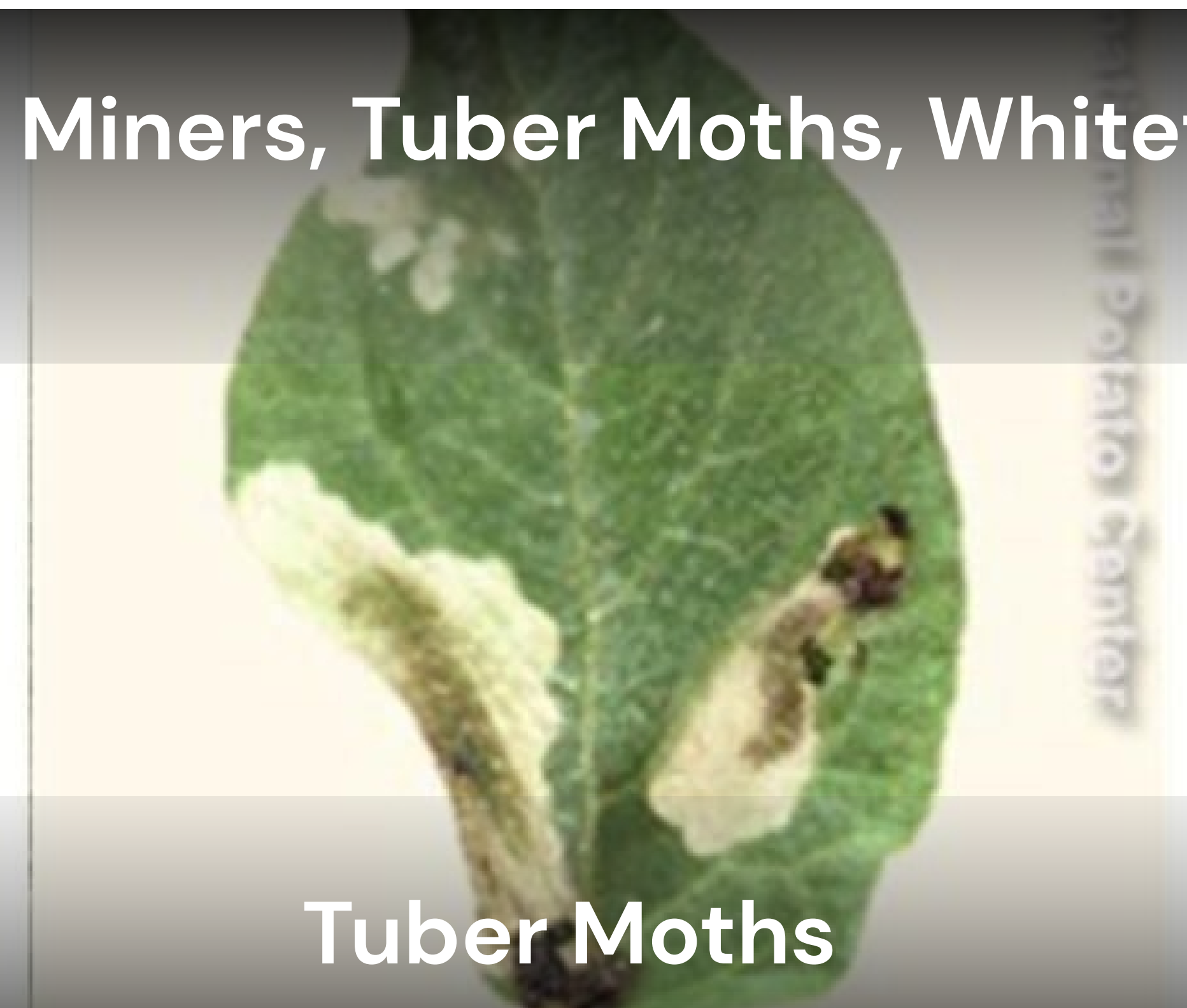
Badeon

- Has both curative and preventive action.
- Fine Chlorothalonil particles ensuring uniform distribution on the leaf surface.
- Rain-fast; adheres to crop thus less washing off.

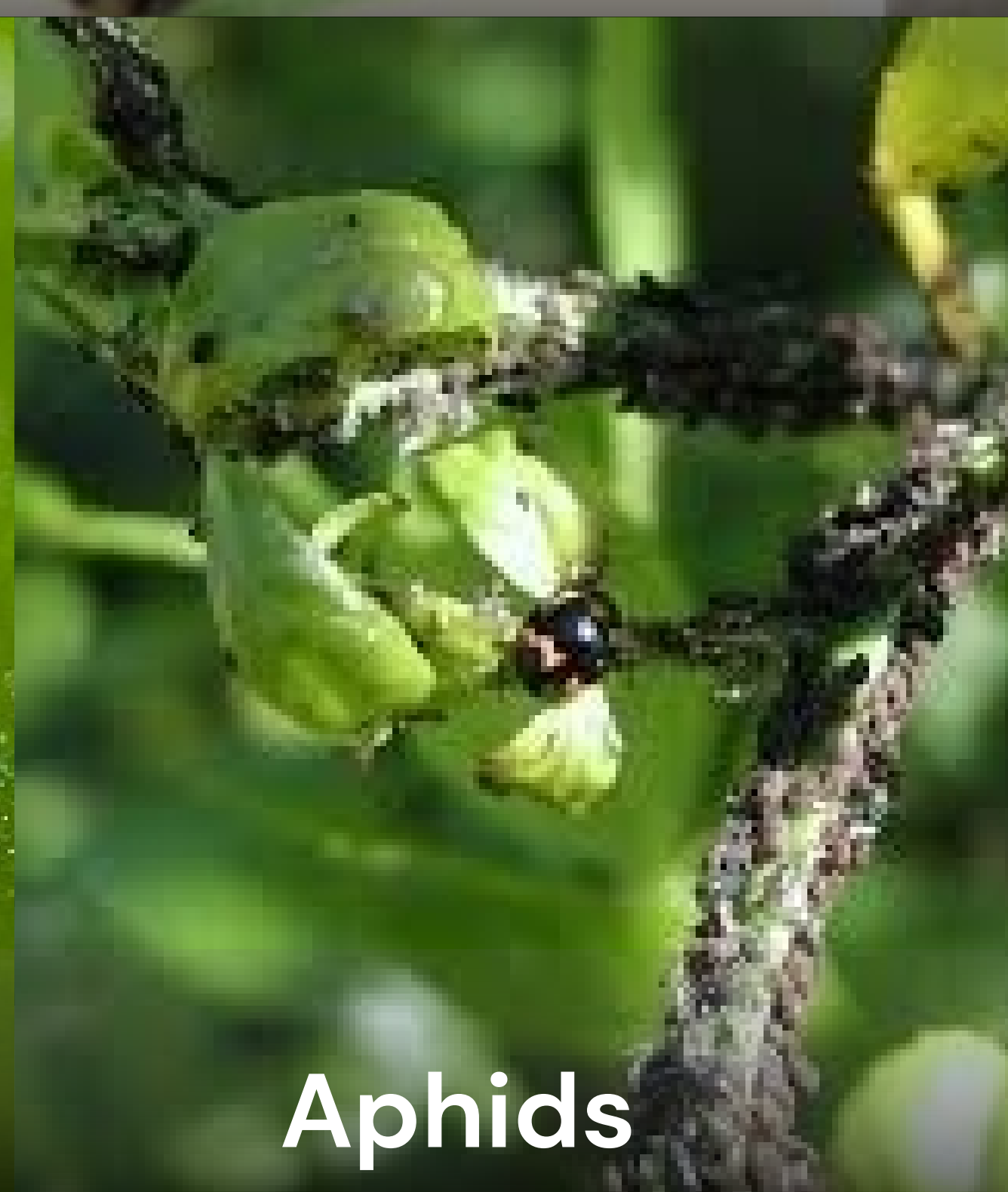
Rates: 30g/20L

Pack Sizes: 500g

Control of Leaf Miners, Tuber Moths, Whiteflies & Aphids



Tuber Moths



Leaf Miners

Aphids

Whiteflies



Abamectin

- Highly efficacious against tuber moths.
- Fast knock-down effect on sucking pests.
- Systemic, contact and translaminar properties.

Rate: 10ml/20L

Pack Sizes: 100mls



Bakeshet

- Quick knock down effect.
- Has both contact and systemic action.
- Easily absorbed in plant tissues and digested by target pest.
- Broad spectrum of control.

Rate: 10ml/20L

Pack Sizes: 100mls, 1L

Control of Potato Caterpillars



Boket Cypermethrin 40gr/L + Profenofos 400gr/L E.C

- Field Proven efficacy against Caterpillars.
- Fast knockdown effect.
- Effective on all Caterpillars instars.
- Inhibits adults from laying eggs preventing progressive generations.

Rate: 25-30ml/20L

Pack Sizes: 100ml, 500ml and 1L